

The Caherblonick Array: Babylonian Idolatry in Ancient Ireland

by Jeremy James



Caherblonick ringfort in County Clare

Normally one leaves matters of historical importance to scholars steeped in the relevant area of expertise. Much the same can be said about ancient history, where archeological artefacts and scattered or incomplete evidence must be pieced together by an experienced team to establish a coherent narrative. In doing so the experts, of necessity, must sometimes make assumptions which affect their conclusions. If their findings meet with general acceptance, they harden over time to become the official narrative.

Historians hate to be contradicted and become uneasy when their assumptions are challenged. Events over the past hundred years or so have shown, however, that they are often assigned to influential positions because their version of past events, and their interpretation of the way those events unfolded, are more politically acceptable or expedient. Since history is written by the victors, the victors must employ the right kind of historian. This is particularly true where unpalatable facts about the Establishment need to be suppressed. The public would be distressed to discover just how cunning and deceitful their leaders really are.

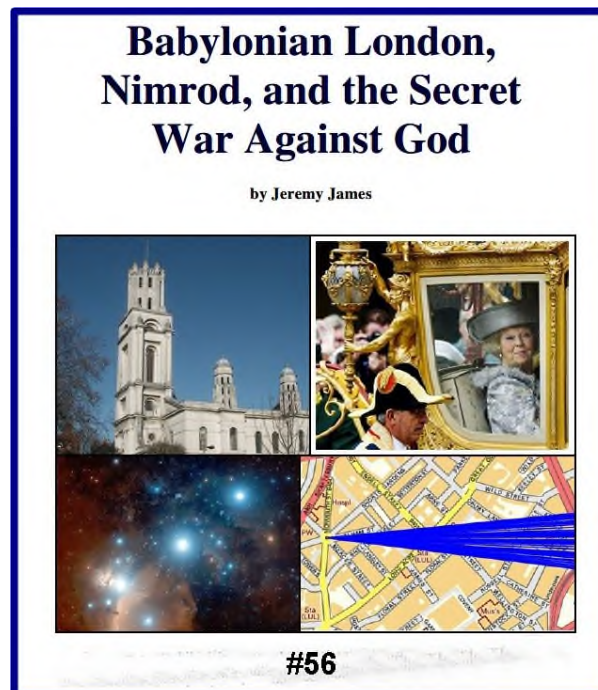
We addressed this level deception in many of our previous papers and have shown how it has continued to worsen. This will not change until Jesus of Nazareth returns to the earth and sets up the long-awaited, Christ-anointed kingdom of righteousness.

Meanwhile it behoves every one of us to expose the big lies which keep the masses in darkness and blaspheme the truths which the prophets of old – the prophets of Israel – revealed to mankind.

The Babylonian mystery religion

In many of our papers we have tried to show that the religion of ancient Babylon is actively practised today, especially by the rich and powerful Cabal that control the affairs of this world. The Enemy disguises this ancient teaching in a variety of ways, thereby drawing the unwary into his net and keeping them from hearing the truth of the Gospel.

As we have shown, his system includes the installation of idolatrous monuments, both to honor himself and to blaspheme God. Our earlier study (#56) gave an in-depth analysis of the way this has been used by secret societies to turn London in the UK into a modern ‘City of the Sun’, akin to Heliopolis in ancient Egypt, where the Sun was a proxy for Lucifer, the so-called angel of light (See *Babylonian London, Nimrod, and the Secret War Against God*).



The same system pays homage to this supernatural being by ‘projecting’ his supposed rays of light through the careful alignment of monuments erected in his honor. Since this is a core aspect of paganism, it is known only to those who have been ‘initiated’ into the so-called mysteries.

The average person knows nothing about it except, perhaps, through the Chinese practise of Feng-shui, where objects in a home or neighborhood are arranged in such a way as to maximise the flow of 'Qi'. Known as Geomancy, the correct positioning of 'sacred objects' – namely objects dedicated in some way to Lucifer – is believed to increase the flow of beneficial energy or Prana in a locality.



The Wellington Monument in Phoenix Park, Dublin.

This revolting object is the largest obelisk in Europe.

Obelisks and standing stones

The idolatrous object most closely associated with Lucifer is the obelisk. A standing stone serves the same purpose. They are defined as *Asherim* in the Bible and condemned in trenchant terms. The LORD loathes these objects and urges men to flee from any activity that uses them. Man has greatly harmed himself down the centuries by turning to *Asherim* for spiritual solace. God's warning is intended for our protection. He wants us to understand the dangers we face when we turn to the supernatural for material benefits. God alone is sovereign and God alone provides for our needs. We must address all our petitions to Him and only to Him!

The Babylonian religion tries to draw mankind in another direction. Consecrated standing stones have been revered since ancient times as a portal to a hidden dimension. They were frequently placed in a circle, or a grove of trees arranged in a circle, to signify the blending of the male and female principles. This blending of opposites and mixing of genders is characteristic of many occult practices.

Paganism was well established in Ireland before the arrival of St Patrick in 432 AD. There is evidence that many of the ringforts which are found today in great numbers across the island were built before Christianity arrived. A great many more were built afterwards, which shows that paganism still flourished in Ireland long after the fifth century.

Traditionally archeologists have argued that ringforts were primarily for defensive purposes and had no ceremonial function. This view has softened in recent years and historians now concede that the ceremonial role of these structures may have been underestimated. However, in the absence of written records, it still remains a matter of conjecture.

Why ringforts have a religious purpose

Wikipedia describes a ringfort as follows:

“Ringforts or ring forts are small circular fortified settlements built during the Bronze Age, Iron Age and early Middle Ages up to about the year 1000 AD. They are found in Northern Europe, especially in Ireland... Ringforts come in many sizes and may be made of stone or earth. Earthen ringforts would have been marked by a circular rampart (a bank and ditch), often with a stakewall [a stout timber palisade or wall]. Both stone and earthen ringforts would generally have had at least one building inside.”

It is not our purpose in this paper to refute the traditional view but to show that it does not take adequate account of the religious significance of other similar structures in ancient times, notably the *Asherim* groves which the Bible confirms were plentiful in the Middle East. It must be remembered that the early settlers of ancient Ireland came from the Middle East and would naturally have taken their ceremonial practices with them. In fact, it is clearly remiss of archeologists to discount the religious aspect of these structures and to focus primarily on agricultural and defensive explanations. They insist on doing this even when many experts admit that the alleged contribution of ringforts to agricultural or defensive purposes is largely speculative. For example, neither explanation can account for the concentration of ringforts in some areas and their absence from other, equally fertile, regions of the same county.

The **Fál** (Irish: [fʲa:lʲ]) or **Lia Fáil** (Irish: [ˌl̪iə ˈfʲa:lʲ]; "Stone of Fál") is a stone at the **Inauguration Mound** (Irish: *an Forrad*) on the **Hill of Tara** in **County Meath**, Ireland, which served as the **coronation stone** for the **King of Tara** and hence **High King of Ireland**. It is also known as the **Stone of Destiny** or **Speaking Stone**.^[1] According to legend, all of the kings of Ireland were crowned on the stone up to **Muirchertach mac Ercae**, c. 500 AD.



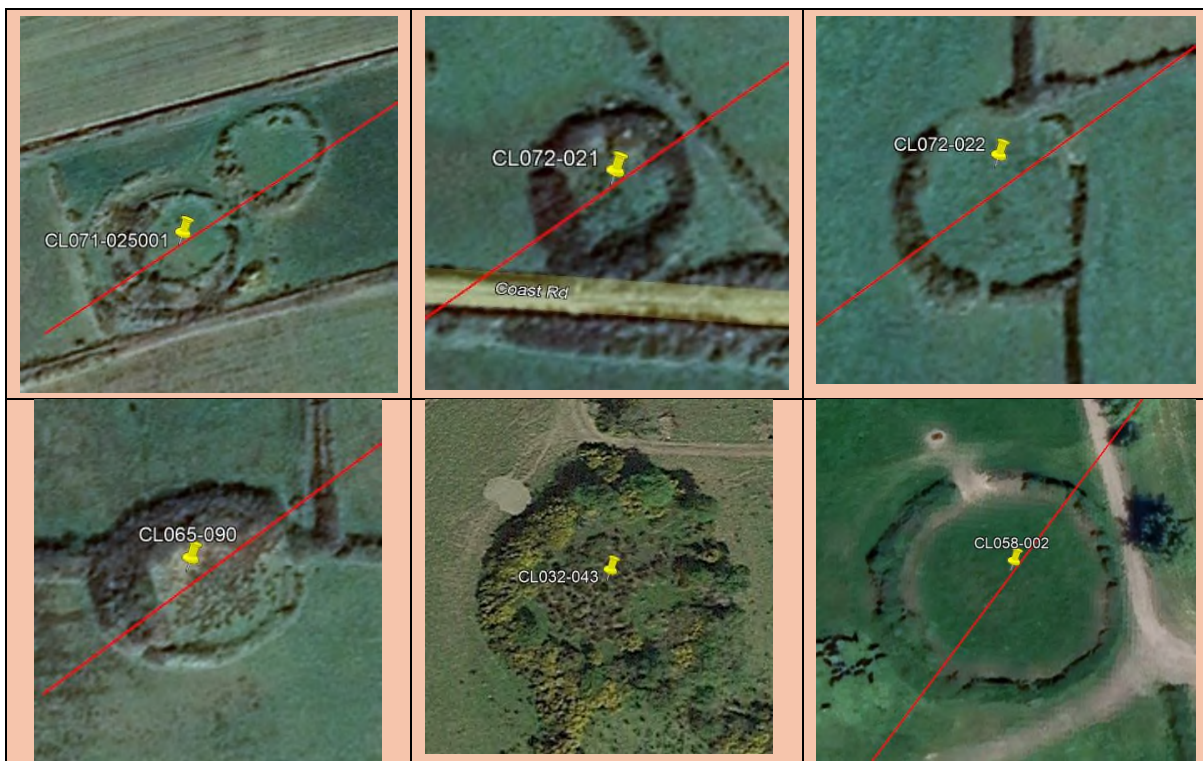
This is probably the best known ancient standing stone in Ireland. Note the 'rays' projecting from its base. [Extract from Wikipedia]

We will now offer tangible, verifiable evidence that the ringforts in ancient Ireland had a religious or mystical purpose and, in all probability, that this was the main reason for their construction. While many may have been put to other uses by later generations, their original purpose was religious.



The works of Alice Bailey were 'channeled' to her by spirit guides. They are published by Lucis Trust, an organization affiliated with the United Nations.

In the three pages that follow we give the coordinates of 15 'lines' formed by sets of *Asherim* (ringforts) in County Clare in the west of Ireland. They all originate at the same point (the ringfort located in Caherblonick) and extend like rays across the county.



Fifteen 'lines' in the Caherblonick Ringfort Array in County Clare

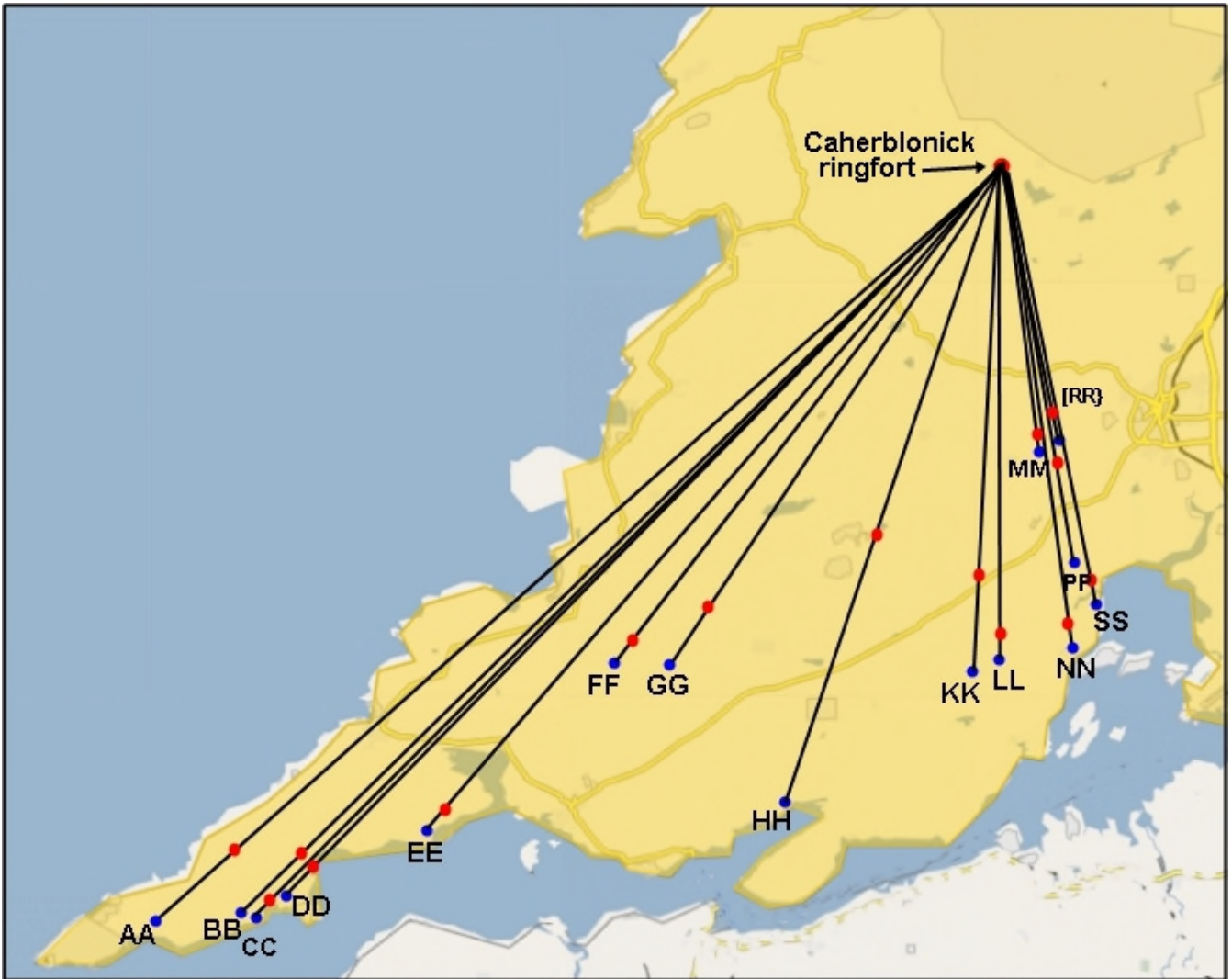
Each set of ringforts in the Table below comprises the Caherblonick ringfort in the topmost position and two other ringforts in perfect alignment with it (thus the term 'lines'). The official OSI reference code for each ringfort is shown, along with its geographical coordinates. All ringforts are visible on Google Earth (using these coordinates) and their alignment can be established using the Google Earth ruler. The precise alignment of each set can also be tested by keying the coordinates for each set of three into ChatGPT (an AI chatbot) and requesting confirmation. All alignments and measurements are taken from the center of each ringfort.

'Line' Title	OSI Ringfort Reference	Longitude	Latitude	Distance between Ringforts 1 & 3
AA	CL016-096	52.967372	-9.129376	40.01 miles
	CL065-032	52.615513	-9.766565	
	CL071-025001	52.577571	-9.834439	
BB	CL016-096	52.967372	-9.129376	37.82 miles
	CL065-052	52.613093	-9.715290	
	CL072-021	52.581051	-9.767789	
CC	CL016-096	52.967372	-9.129376	37.81 miles
	CL065-088	52.595480	-9.740541	
	CL072-022	52.579993	-9.765740	
DD	CL016-096	52.967372	-9.129376	35.84 miles
	CL065-051	52.607818	-9.716385	
	CL065-090	52.598933	-9.730719	
EE	CL016-096	52.967372	-9.129376	30.98 miles
	CL056-087	52.649032	-9.575482	
	CL066-040	52.625784	-9.607742	
FF	CL016-096	52.967372	-9.129376	23.64 miles
	CL047-045	52.708797	-9.421067	
	CL057-006	52.684999	-9.447673	
GG	CL016-096	52.967372	-9.129376	22.49 miles
	CL058-006	52.701777	-9.372663	
	CL058-002	52.683019	-9.389751	

'Line' Title	OSI Ringfort Reference	Longitude	Latitude	Distance between Ringforts 1 & 3
HH	CL016-096	52.967372	-9.129376	23.77 miles
	CL032-033	52.830328	-9.202607	
	CL068-015001	52.640178	-9.303472	
KK	CL016-096	52.967372	-9.129376	18.20 miles
	CL049-002	52.754141	-9.149072	
	CL059-008	52.704647	-9.153594	
LL	CL016-096	52.967372	-9.129376	17.71 miles
	CL049-018	52.729035	-9.127455	
	CL049-032	52.711334	-9.127343	
MM	CL016-096	52.967372	-9.129376	10.61 miles
	CL032-043	52.833296	-9.124153	
	CL040-005	52.814005	-9.123473	
NN	CL016-096	52.967372	-9.129376	20.86 miles
	CL060-002	52.699032	-9.096489	
	CL060-019001	52.666482	-9.092515	
PP	CL016-096	52.967372	-9.129376	13.61 miles
	CL032-052	52.824931	-9.110687	
	CL041-150	52.771224	-9.103687	
RR	CL016-096	52.967372	-9.129376	11.00 miles
	CL033-045	52.843149	-9.099334	
	CL041-009	52.809918	-9.091461	
SS	CL016-096	52.967372	-9.129376	15.78 miles
	CL050-022	52.752206	-9.065482	
	CL050-020	52.742754	-9.062673	

Average distance in righthand column = 24 miles

'OSI' = Ordnance Survey of Ireland (also known as Tailte)



The Caherblonick Array in County Clare

A pattern like this requires careful planning and accurate measurement. It could not have arisen by chance, though sceptics would probably claim that it did. We will leave our readers to decide that for themselves.

Some will rightly ask how the alignments could have been achieved using the limited and, no doubt, primitive technology available more than a thousand years ago. After all, we would have difficulty today getting three points to align perfectly over an average distance of 24 miles without the use of a GPS system. We can only speculate as to how this was achieved. A physical technique seems highly improbable. In light of this, and having regard to the geomantic principle on which the pattern is based, we are justified in asking whether the priestly caste – Druids, presumably – consulted with their spirit guides and built only on sites that *they* nominated? If this was the case then the ‘religious’ dimension becomes even more pronounced. The pagan priests were installing an idolatrous network across the landscape which the spirit guides themselves had devised.

This may have been one of the methods that Satan used, both in pre-Christian times and thereafter, to claim authority or sovereignty over the earth. In doing so he was also bringing the local population under his spell. The network may be a constituent part of the “veil” that Satan has spread over all nations, a veil that Jesus will utterly destroy when he returns as King of Kings and Lord of Lords:

“And he will destroy in this mountain the face of the covering cast over all people, and the veil that is spread over all nations.” (Isaiah 25:7)

The standing stone and wooden pillar

In order to fully conform with the Babylonian paradigm, the ringforts or circular enclosures must have had an upright pillar, such as a standing stone, at their center. We are not aware of any archeological evidence that would support this hypothesis but it is certainly one that deserves investigation by the experts. It is possible that a totem pole or timber column was used, leaving no archeological remnant. The Word of God refers to the ancient custom of selecting and felling a suitable upright tree, decorating it with silver and gold, and then installing it in a chosen location for public worship:

“Thus saith the LORD, Learn not the way of the heathen, and be not dismayed at the signs of heaven; for the heathen are dismayed at them. For the customs of the people are vain: for one cutteth a tree out of the forest, the work of the hands of the workman, with the axe. They deck it with silver and with gold; they fasten it with nails and with hammers, that it move not. They are upright as the palm tree, but speak not: they must needs be borne, because they cannot go. Be not afraid of them; for they cannot do evil, neither also is it in them to do good.” (Jeremiah 10:3-5)

As the Word of God warns, we are not to learn “the way of the heathen”, meaning we are not to allow ourselves to be persuaded by this pagan philosophy. The actual system of idolatry that they used is described in this passage, which is unusual in God’s Word. This was probably done so that the righteous would have absolutely no excuse. The pagan system was ancient and universal and likely to persist far into the future, so a loud warning was given.

The LORD also asks us not to fear these poles or *Asherim*. They can do neither good nor evil. The common man was taught to respect these heathen idols and to imagine that they possessed some kind of supernatural power. On the one hand this made them more attractive and, on the other, less likely to be damaged or vandalised. One reason the ringforts of Ireland have remained intact for so long is the commonly held belief that anyone who tampered with them would incur the wrath of the fairies. This would explain why they are more generally known as “fairy forts” or “fairy raths”. Clearly many country folk understood the connection between these structures and the powers of darkness.

CONCLUSION

The world now stands on the edge of a precipice. The Baal worshippers have established a stranglehold over humanity and are on the point of igniting a conflagration from which they plan to create a 'new world order'. In doing so they intend to lure as many as possible into their Antichrist system of belief. Just as idolatry has been used to beguile and imprison the minds of men for time immemorial, it will be used again – with a vengeance – in the End Time to trap a large segment of mankind and bind them to Satan.

“Ye shall make you no idols nor graven image, neither rear you up a standing image, neither shall ye set up any image of stone in your land, to bow down unto it: for I am the LORD your God.” (Leviticus 26:1)

When Gideon tore down the altar in the Baal grove that belonged to his father, he set his father free. His eyes were opened. When the enraged locals came to him, baying for the blood of his son, he laughed at them! He said, in effect, that if Baal is such a powerful being, let him deal with Gideon himself!

Idolatry is as much a threat today as it was two thousand years ago. The idols may have changed but their ability to bind us spiritually has not! For many the Cosmos is now their god, the multi-dimensional, transcendental realm of the mystics and astrophysicists. The idols themselves are a thousand false ideas and implanted images which feed this 'cosmic' vision and lead men to believe they have no need of God.

Jesus seemed to be referring to this modern form of idolatry when, in his address to John in the Book of Revelation, he said: **“Because thou sayest, I am rich, and increased with goods, and have need of nothing; and knowest not that thou art wretched, and miserable, and poor, and blind, and naked:” (Revelation 3:17)**

John himself ended his wonderful First Letter with a similar word of warning:

“Little children, keep yourselves from idols. Amen.” (1 John 5:21)

**Jeremy James
Ireland
October 26, 2024**

For further information visit www.zephaniah.eu

Copyright Jeremy James 2024