

The Burning Tower – A Planned Event

by Jeremy James

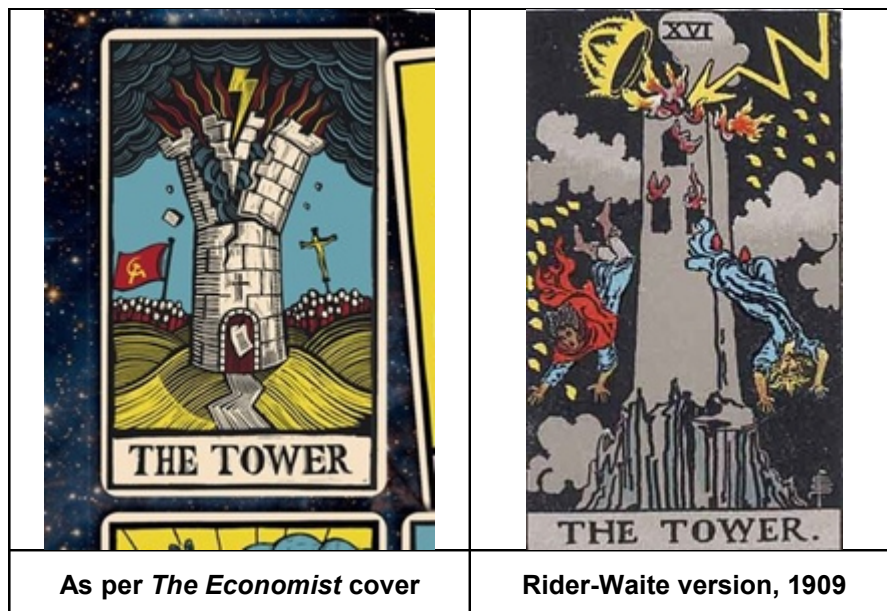


A former member of the Illuminati was once asked if their organization had any weaknesses. In reply he said their principal weakness was their incredible arrogance. If ever they faltered on the road to Armageddon, it would likely be due to this fact.

Increasingly we are seeing examples of this arrogance that seem to go further than ever before. In January 2017, *The Economist* magazine published a set of eight Tarot cards on the front cover of a special edition, purporting to predict the main events of worldwide significance in the year ahead:

	<p>From <i>The Economist</i> website:</p> <p>“The World in 2017 contains The Economist’s annual collection of detailed, numerate and opinionated predictions for the year ahead. The World in 2017 features leading figures from politics, business, finance, science, technology and the arts alongside prominent journalists from The Economist and other leading news publications.”</p>
---	--

We could write a long paper discussing the arcane symbolism behind this bizarre cover, but instead we will focus on just the first card – 'The Tower':



This is normally understood to represent the sudden flash of truth that breaks up the old regime. The lightning bolt is a common symbol of Satan himself. Thus the card points to the destruction of the Old World Order, which *The Economist* implies is characterised by two broad political camps, a Christian camp and a Communist camp. The Illuminati intend to replace these with a New World Order, ruled by a totalitarian, fascist system of government.

They had already used the Burning Tower motif when they declared the dawning of the NWO in September, 2001. The three towers (not two) in Manhattan were destroyed in an audaciously arrogant act of violence – a kind of thunder-clap.

Grenfell Tower

The Economist broadcast part of the Illuminati program for 2017 by publishing these eight Tarot cards. These strange people revel in mystical signs and symbols. The Burning Tower prediction came to pass on 14 June when a high-rise apartment complex in London was almost completely incinerated. Grenfell Tower was 66.6 metres tall and housed about 600 people – comprising a large number of women and children – in its 24 storeys. While the ultimate death toll is as yet unknown, a large proportion of these people are still missing.

Eyewitnesses report seeing mothers throwing their children from the upper storeys, hoping those waiting below would be able to catch them. There were similar reports of falling bodies on 9/11. Interestingly, the Rider-Waite card depicts the same horrific scene. It also shows the lightning bolt in the form of a very distinct 'W' – the area code for Grenfell Tower is W11. The number '11' is a well-known Illuminati signature, while 'W' represents the Hebrew letter 'vav', another of their favorite symbols (See our earlier paper #42 (2013)).

The Antichrist Reference

In order to appreciate the importance of the Burning Tower symbol to the Illuminati – the Children of Wickedness – we need to look at a dark episode from the Book of Judges. Abimelech was the son of Gideon by his Shechemite concubine. When Gideon died, Abimelech conspired with some thugs to murder his seventy brothers – only one survived. The Word of God tells us they were all executed on the same rock. After this callous act of brutality Abimelech declared himself king of Israel.

His one surviving brother prophesied his destruction as follows:

"...let fire come out from Abimelech, and devour the men of Shechem, and the house of Millo; and let fire come out from the men of Shechem, and from the house of Millo, and devour Abimelech."

(Judges 9:20)

Later, when he began to meet with serious resistance, he dealt savagely with his enemies. When about a thousand men and women took shelter in the tower of Shechem, he showed his followers exactly what he wanted them to do:

"And Abimelech gat him up to mount Zalmon, he and all the people that were with him; and Abimelech took an axe in his hand, and cut down a bough from the trees, and took it, and laid it on his shoulder, and said unto the people that were with him, What ye have seen me do, make haste, and do as I have done. And all the people likewise cut down every man his bough, and followed Abimelech, and put them to the hold, and set the hold on fire upon them; so that all the men of the tower of Shechem died also, about a thousand men and women." (Judges 9:48-49)

Abimelech is one of several Antichrist figures in the Bible. He exhibits the same cunning and ruthlessness that will characterize the End Time Antichrist, whom the Illuminati revere as the true saviour of mankind.



His lust for incinerating innocent victims proved his undoing. When he forced the inhabitants of Thebez, a neighboring town, to flee for shelter in a high tower, he **"went hard unto the door of the tower to burn it with fire" (Judges 9:52)**. But a woman cast a millstone over the side and it split his skull. Rather than die at the hands of a woman he ordered his armorbearer to slay him.

Demonic Immolation

Death by fire is known as immolation. It has a special name because it has been around for so long. As we stated in previous papers, the fire-bombing of populous cities in Germany and Japan during World War II was nothing less than the deliberate immolation of tens of thousands of women and children. It served no strategic purpose.

The worship of Molech, which was endemic in Biblical times, entailed the voluntary immolation of a child by its own parents. Abortion is a modern form of immolation, where a mother voluntarily offers her own child on the altar of self-interest (idolatry), after which its tiny body is burnt.

The tragic events at Grenfell Tower were not accidental. Residents had been reporting fire safety concerns to the municipal authorities for several months before the fire. The building itself, like all high-rise residential buildings, was designed to contain a fire within the storey where it started and stop it spreading with any rapidity to other floors. The fire at Grenfell Tower spread very quickly because it was transmitted to the upper floors from the outside. Incredibly, the exterior cladding that was added to the building long after it was constructed was flammable. In addition, residents were instructed to remain inside their apartments until they were rescued by the fire services. All who followed this instruction died.

[As an aside, the gutted building is structurally sound. There is no risk that it will collapse. This is further evidence that the fires in the three towers on 9/11 could not have inflicted the structural damage that caused them to collapse in a pile of dust.]



<i>Asherim</i> in alignment with Grenfell Tower	
	
Meath War Memorial	Grosvenor Chapel
	
War Memorial, Southwark	St Mary's, Rotherhithe

Grenfell Tower fulfilled the first prediction on the cover of *The Economist*. The Illuminati like to pretend they can predict the future, which is not difficult if you have already planned the events in question and possess the means to carry them out.

Many will find it hard to believe that an act like this was deliberate. They don't understand the importance of occult symbolism to the Illuminati, or the role played by immolation in the works of darkness. For this reason we have included another piece of evidence, based on the occult *Asherim* of Babylonian London (see our paper #56 (2014)).

Grenfell Tower is located at 51.30.50.38N and 0.12.56.42W. This places its center on an occult 'power line' running through four major Asherim (See **Appendix A**):

1. The Meath War Memorial at Lancaster Gate (51.30.40.42N and 0.10.47.91W)
2. The spire of Grosvenor Chapel, Mayfair (51.30.32.41N and 0.09.05.22W)
3. The War Memorial, Southwark (51.30.15.35N and 0.05.27.21W)
4. The spire of St Mary's Church, Rotherhithe (51.30.04.92N and 0.03.15.13W)



Its center is also located at an equal distance from two of the largest obelisks in London – Cleopatra's Needle (height 69ft) [*see photo on left*] and Lambeth Bridge NW (height 40ft) [*see photo on right*]. The former is regarded as one of the most prestigious obelisks in the world, having once stood in the ancient Egyptian city of Heliopolis.

The Babylonian signature is undeniable.

The chances of all this happening by accident are zero.

Jeremy James
Ireland
June 18, 2017

For further information visit www.zephaniah.eu

Copyright Jeremy James 2017

Grenfell Tower is in Alignment with Four Major *Asherim*



Readers can check this alignment for themselves by going into Google Earth and clicking on 'Tools' and then on the 'Ruler' option. Place the cursor over the center of Grenfell Tower and click. Then draw the line out and place the cursor over St Mary's Church, Rotherhithe, and click twice. The line should now be fixed in position. If you check the other three *Asherim* you will find they all align as shown in the images below:

Grenfell Tower



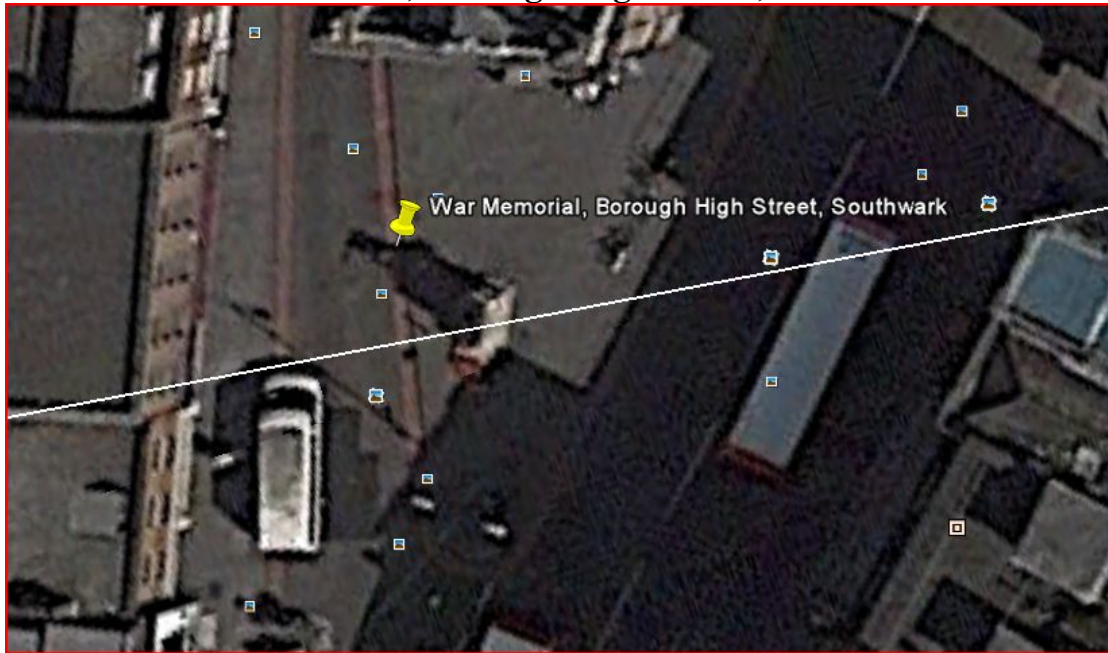
Meath War Memorial, Lancaster Gate



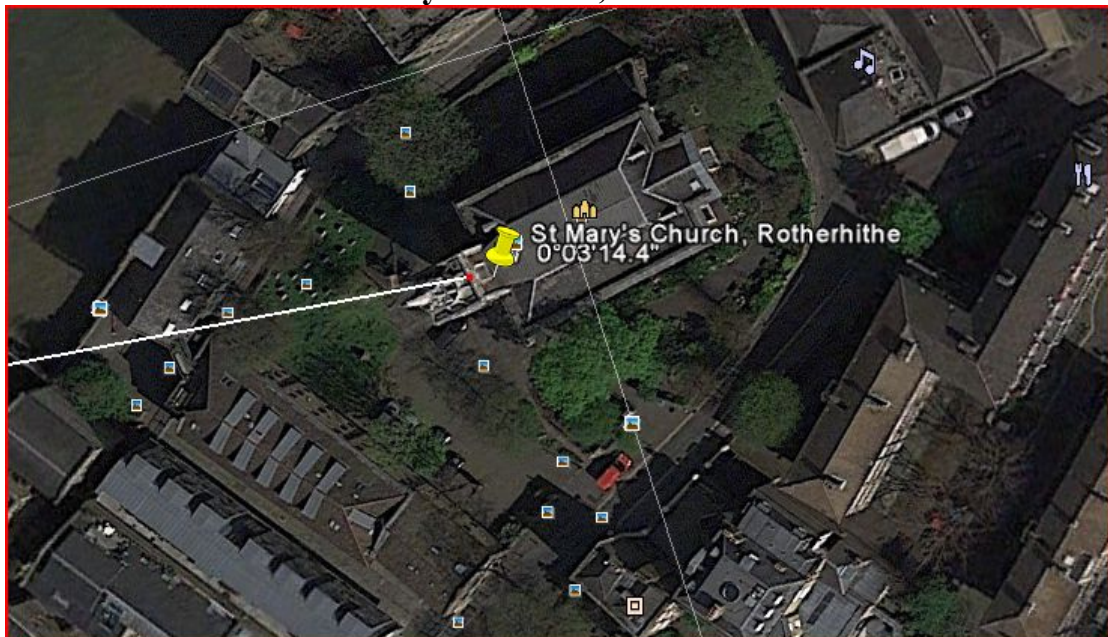
Grosvenor Chapel, Mayfair



War Memorial, Borough High Street, Southwark

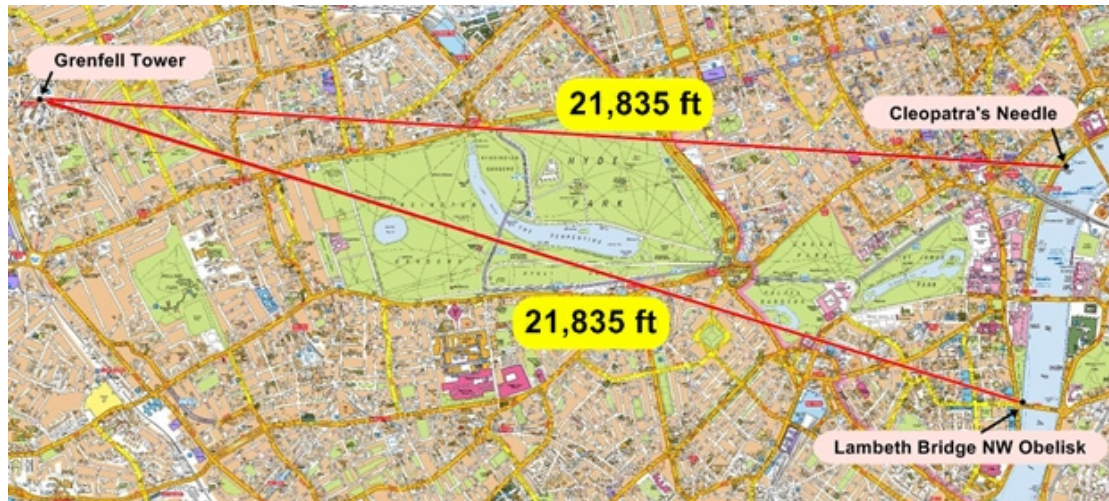


St Mary's Church, Rotherhithe



Grenfell Tower is Equidistant from Two Massive Obelisks

In addition to all this, Grenfell Tower is equidistant from two massive obelisks on the west bank of the Thames – Cleopatra's Needle and the northerly obelisk beside Lambeth Bridge. The distance from each to the center of Grenfell Tower is exactly 21,835ft.



The occult significance of this phenomenon – the location of a structure at an equal distance from two obelisks – is explained in our study on Babylonian London (#56).



Cleopatra's Needle



Lambeth Bridge Obelisk